



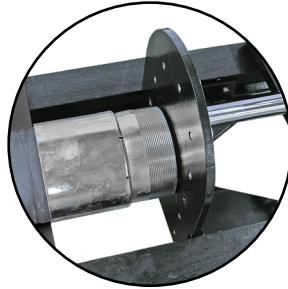
CUSTOM CRIMP™

Innovating SMART Hose Assembly Solutions Since 1979

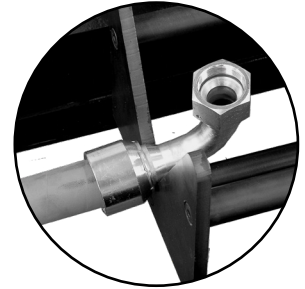
CC-FP10 Fitting Pusher



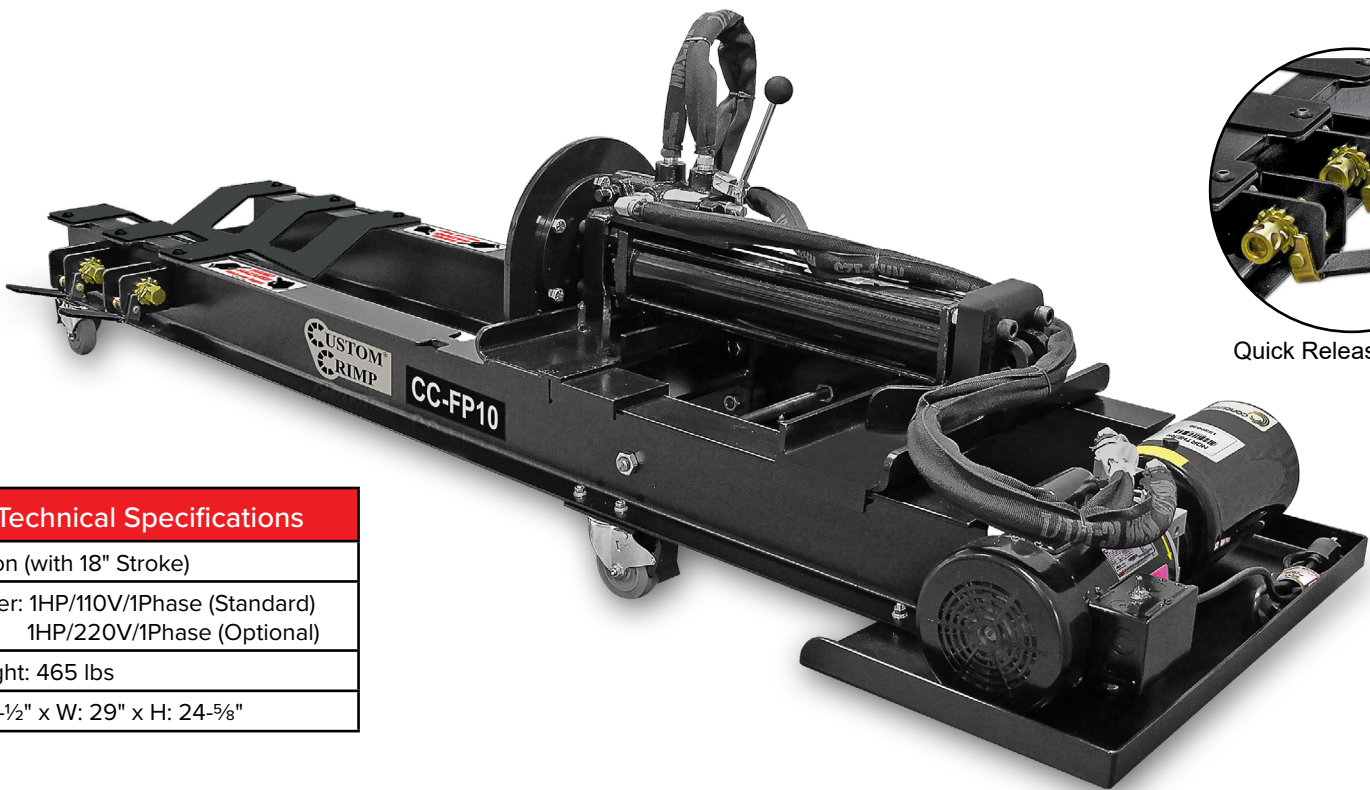
Flexible Tie Down System: Securely grips hoses from 2 to 12 inches.



Easy Fitting Insertion: Fitting pusher makes inserting industrial fittings faster and safer.



Elbow Fitting Adapter: Ability to adjust the position of the ram makes it possible to assemble a wide variety of fittings.



Quick Release Pedals

Technical Specifications

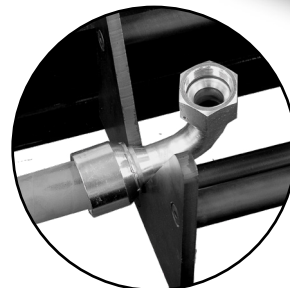
10 Ton (with 18" Stroke)
Power: 1HP/110V/1Phase (Standard) 1HP/220V/1Phase (Optional)
Weight: 465 lbs
L: 91-1/2" x W: 29" x H: 24-5/8"



CC-FP10 2" Strap w/ Flat Hook (Included)



CC-FP10 1-1/8" Wrench (Included)



CC-FP10 Elbow Fitting Adapter (Included)



CC-FP10 Pusher Spacers (Included)



CUSTOM CRIMP™

Innovating SMART Hose Assembly Solutions Since 1979

CC-FP10 Fitting Pusher

SETUP IS QUICK

With the CC-FP10 Series Fitting Pusher's low profile and swivel casters, it can be quickly and easily moved to the job.

The flexible tie down system makes it easy to quickly and accurately position the hose.

OPERATION IS SIMPLE

Once the hose is positioned, simply start the fitting and actuate the pump. The fitting will be accurately positioned in a matter of seconds. The 16" stroke and dual position of the ram accommodates virtually any fitting.

The fitting shown took approximately 7 seconds to install.

OPERATION IS SAFER AND MORE ACCURATE

"Traditional" methods of installing large fittings can result in damaged fittings, and at the very least, is a time consuming procedure.

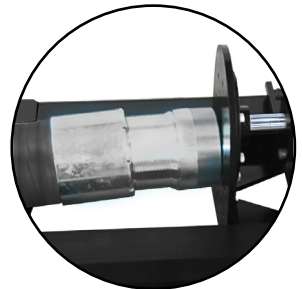
THE CC-FP10 WILL SAVE YOU \$\$\$...

The speed, safety and convenience of the CC-FP10 will start to save you dollars from the moment you begin to use it.

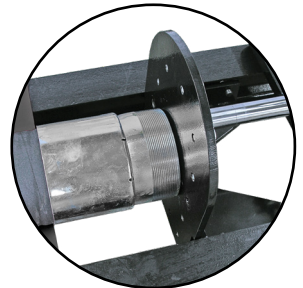
CAUTION: The ram can generate up to 10 tons of force. Always wear safety glasses, and be aware of pinch points which can cause injury.



Flexible Tie Down System



10 Tons Of Available Force



Faster & Safer Industrial Fitting Insertion



Avoid Injuries & Defective Production

