

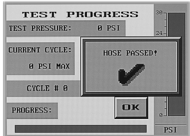


# CUSTOM CRIMP™

Innovating SMART Hose Assembly Solutions Since 1979

## ELECTRONIC “PLC” SERIES Test Benches

Intuitive Screens: Lead the operator through the set up and monitoring of the test procedure.



Large capacity cabinet to make large hose loading easy



Removable Side Panel



Available Extension Trough



Available 90 PSI Booster Pump

### ENGINEERED TO ACCOMMODATE YOUR NEEDS

- Automatic pressure cut off when door is opened.
- Test area is at a convenient working height.
- Full front opening allows hose to be loaded on a skid.
- 6" Touch screen and user friendly navigation.
- Print a detailed report of the tested assembly.
- Built-in USB port to download log files and save into a USB flash drive.
- 6 Port multiple outlet manifold.
- Available extension trough in 10 foot sections.
- Removable side panel permits the testing of longer hose assemblies with the attachment of an optional trough.
- Available 90 psi booster pump for faster filling of hose.

### DURABLE + RELIABLE DESIGN = PROFITABILITY

- Powder coat finish for durability.
- 1/2" Polycarbonate safety window.
- Interior coated with polyurethane bed liner material.
- Built in work light for good visibility during testing.

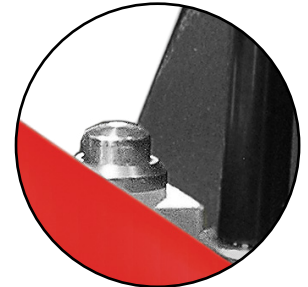
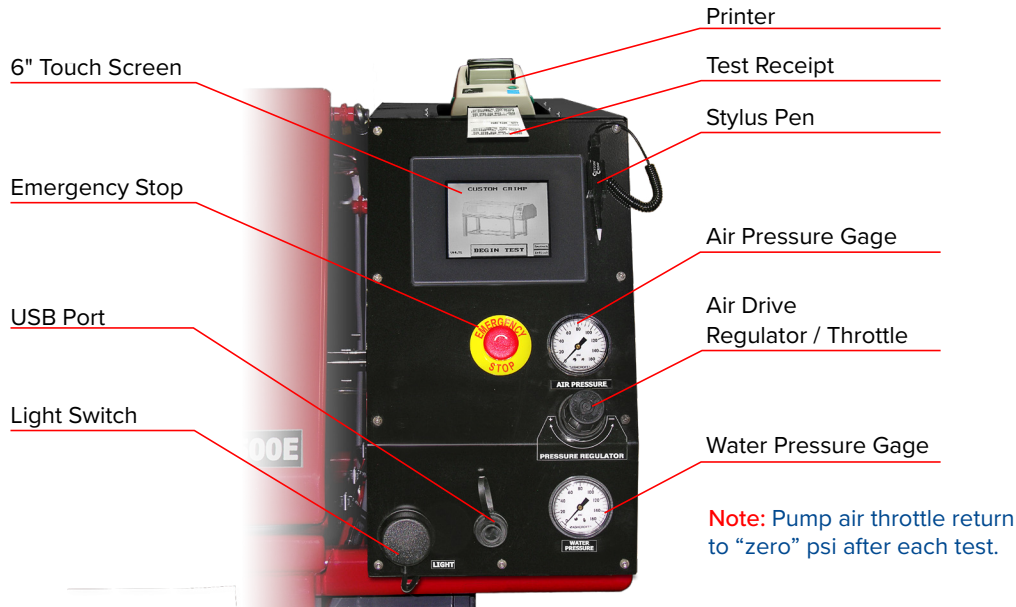


# CUSTOM CRIMP™

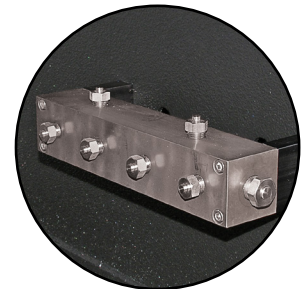
Innovating SMART Hose Assembly Solutions Since 1979

## ELECTRONIC "PLC" SERIES Test Benches

CONTROL PANEL

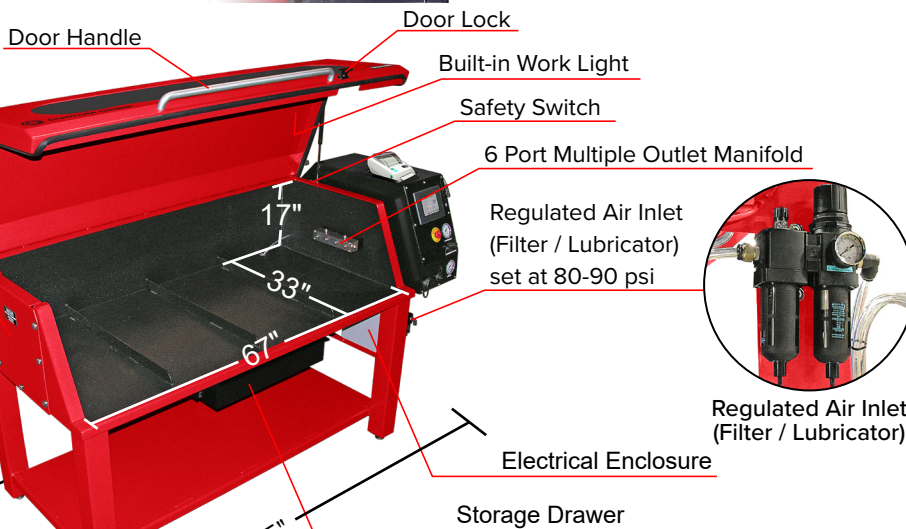


Safety Switch



Multi-Port Manifold Outlet

Note: Pump air throttle return to "zero" psi after each test.



Regulated Air Inlet (Filter / Lubricator)



Built-In Work Light

Removable Side Panel

78"

39"

85"

17"

33"

67"

| Technical Specifications  | BE1500PLC                                | BE2500PLC  | BE3500PLC  | BE4000PLC  |
|---------------------------|--|------------|------------|------------|
| Inside cabinet dimensions | L: 67" x W: 33" x H: 17"                 |            |            |            |
| Overall dimensions        | L: 85" x W: 39" x H: 78" (Closed H: 52") |            |            |            |
| Weight                    | 955 lbs                                  |            |            |            |
| Maximum pressure          | 21,750 PSI                               | 36,250 PSI | 50,750 PSI | 60,000 PSI |
| Low pressure              | 5,000 PSI                                |            |            |            |

