



# CUSTOM CRIMP™

Innovating SMART Hose Assembly Solutions Since 1979

## MANUAL “BE” SERIES Test Benches



Large capacity cabinet to make large hose loading easy



Removable Side Panel



Available Extension Trough



Available 90 PSI Booster Pump

### ENGINEERED TO ACCOMMODATE YOUR NEEDS

- Automatic pressure cut off when door is opened.
- Test area is at a convenient working height.
- Full front opening allows hose to be loaded on a skid.
- 6 Port multiple outlet manifold.
- Available extension trough in 10 foot sections.
- Removable side panel permits the testing of longer hose assemblies with the attachment of an optional trough.
- Available 90 psi booster pump for faster filling of hose.

### DURABLE + RELIABLE DESIGN = PROFITABILITY

- Powder coat finish for durability.
- 1/2" Polycarbonate safety window.
- Interior coated with polyurethane bed liner material.
- Built in work light for good visibility during testing.

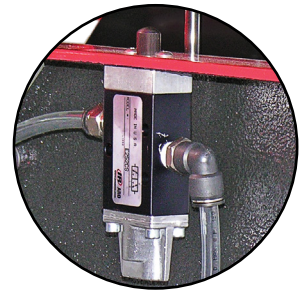


# CUSTOM CRIMP™

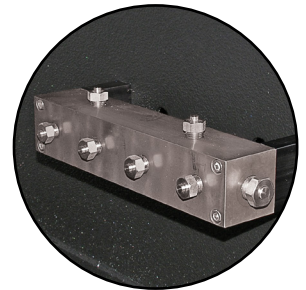
Innovating SMART Hose Assembly Solutions Since 1979

## MANUAL "BE" SERIES Test Benches

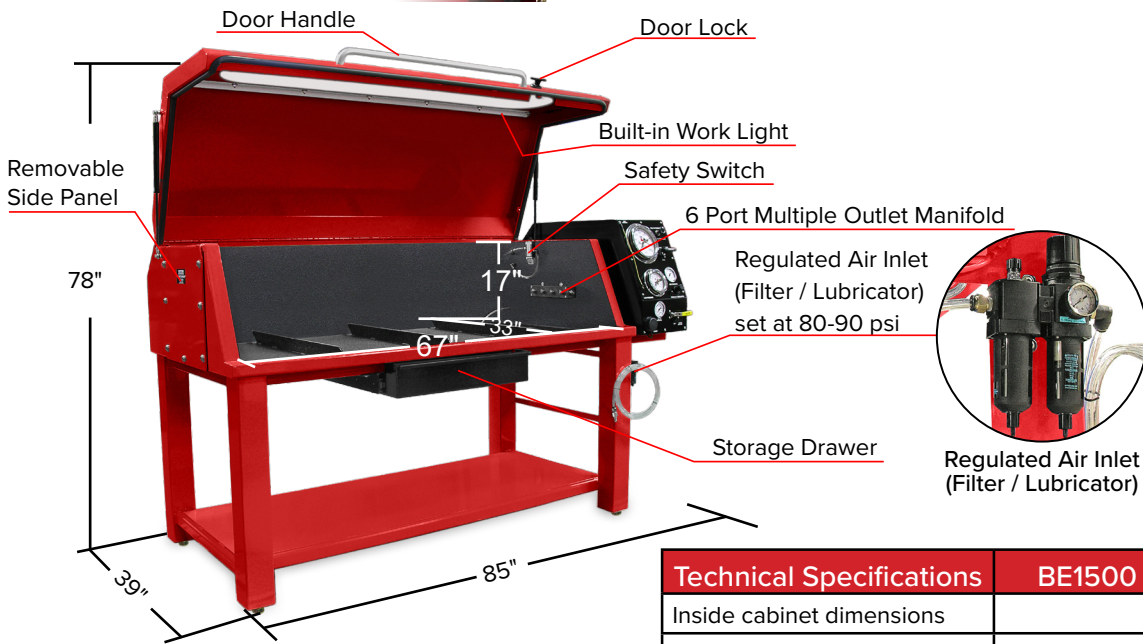
CONTROL PANEL



Safety Switch



Multi-Port Manifold Outlet



Technical Specifications	BE1500	BE2500	BE3500
Inside cabinet dimensions	L: 67" x W: 33" x H: 17"		
Overall dimensions	L: 85" x W: 39" x H: 78" (Closed H: 52")		
Weight	955 lbs		
Maximum pressure	21,750 PSI	36,250 PSI	50,750 PSI
High pressure gage	30,000 PSI	40,000 PSI	60,000 PSI
Low pressure gage	5,000 PSI		

