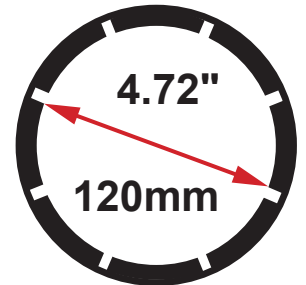




CUSTOM CRIMP™

Innovating SMART Hose Assembly Solutions Since 1979

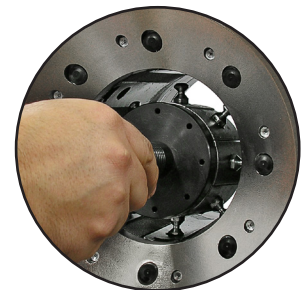
CC150 General Production Hose Crimper



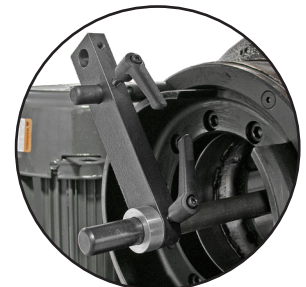
Max Head Opening
W/O Dies



Micrometer Style Adjustment:
Provides speed, precision
and repeatability.



Quick Change Tool:
Makes die changes a quick
and simple process.



Save Time: Removable back
stop for multiple crimps of the
same hose and fitting.

ENGINEERED TO ACCOMMODATE YOUR NEEDS

- Hose capacity up to 1-¼" multi-spiral hydraulic and up to 2" industrial hose.
- Maximum head opening w/o dies 4.72" (120mm).
- Metric Micrometer Style Adjustment makes precise settings of crimp diameters simple.
- Foot Switch permits dies to be "jogged" into position and keeps both hands free.
- Quick Change Tool makes die changes a quick and simple process.
- The Adjustable Back Stop speeds multiple crimps of the same hose and fitting.
- Easy grease maintenance through the 8 grease fittings.
- Protective Master Die Foam Pads between the die fingers prevent debris from dropping into the critical surfaces and causing permanent damage.
- Reservoir mounting holes allow the crimper to be bench or truck bed mounted if required.

DURABLE + RELIABLE DESIGN = PROFITABILITY

- 240 Tons of crimping force.
- 5 HP motor wired at 230 volts 3 phase with gear pump for fast crimps (Standard).
- Complete range of dies and accessories available.



CUSTOM CRIMP™

Innovating SMART Hose Assembly Solutions Since 1979

CC150 General Production Hose Crimper



84mm Quick Change Tool
(Included) P/N:102572



Foot Pedal Assembly
(Included) P/N:104118



Manual Back Stop (Included)
P/N:MBS-60



Die Rack 9 Station Die Holders
(Included) P/N:102616-84mm



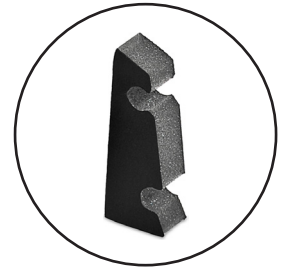
Crimper Stand 16 Station
Die Holders (Optional)
P/N:101247-84



Mini Grease Gun w/ CRIMPX Die
Lubricant 3 oz mini grease tube
(Included) P/N:103889



Available: CRIMPX Die Lubricant 3
oz mini grease tube P/N:103887



8 Protective Master Die
Foam Pads (Included) P/N:102531

CC150 Technical Specifications

Crimping Force: 240 Ton
Hydraulic Hose Capacity: 2SP: 2", 4SP: 1-1/2", 6SP: 1-1/4"
Industrial Hose Capacity: 2"
Crimper Size: L: 20" x W: 29" x H: 28"
Crimper Weight: 495 lbs
Power: 5HP / 230V / 3Phase (Standard) 5HP / 440V / 3Phase (Optional) 5HP / 230V / 1Phase (Optional) 1HP / 12VDC/24VDC (Optional)
Die series: 84S
Adjustability: Metric
Opening w/o dies: 120mm / 4.72"
Master die inside diameter: 84mm / 3.31"
Master die travel: 38mm / 1.5"
Reservoir capacity: 8 US Gallons
Oil type: ISO 46 Hydraulic Oil

Metric Dial Micrometer — The 5 HP motor delivers the power needed to get the job done quickly

Built-in die storage panel — keeps frequently used die sets readily available

Power Switch — The Foot Switch permits dies to be "jogged" into position and keeps both hands free

Small Footprint — for minimum use of space

Dimensions: 28" H, 20" W, 29" D

