



CUSTOM CRIMP™

Innovating SMART Hose Assembly Solutions Since 1979

IC485 Production / Industrial Hose Crimper



InfoCrimp™ Technology Features

Functionality:

- Easy to use interface, on a 10-inch color capacitive touch screen.
- Daily reports*.
- Remote downloading of updated crimp specifications*.
- Favorite thousands of crimp details.
- Security - end-to-end data encryption from tablet to cloud.
- Operators only have access to essential crimp applications.

Operationally:

- Bluetooth calipers provided with each crimper.
- User accounts track operations to individual team members.
- Remote troubleshooting*.
- In-depth training and tutorial guides.
- Video support*.

Longevity:

- Preventative maintenance alerts.
- Full controller backup to the cloud*.
- Future enhancements through cloud updates*.

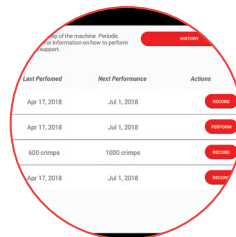
*Needs connection to Wi-Fi.



Custom Crimp® InfoCrimp™ Technology, the future of crimping at your fingertips



Intuitive screens lead the operator through the setup and crimping process



Be alerted to preventative maintenance, record and view history of maintenance performed.



InfoCrimp™ Technology supports bluetooth calipers to input crimp diameter measurements



CUSTOM CRIMP™

Innovating SMART Hose Assembly Solutions Since 1979

IC485 Production / Industrial Hose Crimper



CC-Foot Switch (Included)
P/N:CC-FOOTSWITCH



99mm Quick Change Tool
(Included) P/N:102571



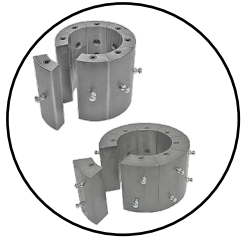
Manual Back Stop
(Included) P/N:MBS-60



Mini Grease Gun w/ CRIMPX Die
Lubricant 3 oz mini grease tube
(Included) P/N:103889



Bluetooth Digital Calipers
(Included) Calipers P/N:105002
Bluetooth Dongle P/N:104996



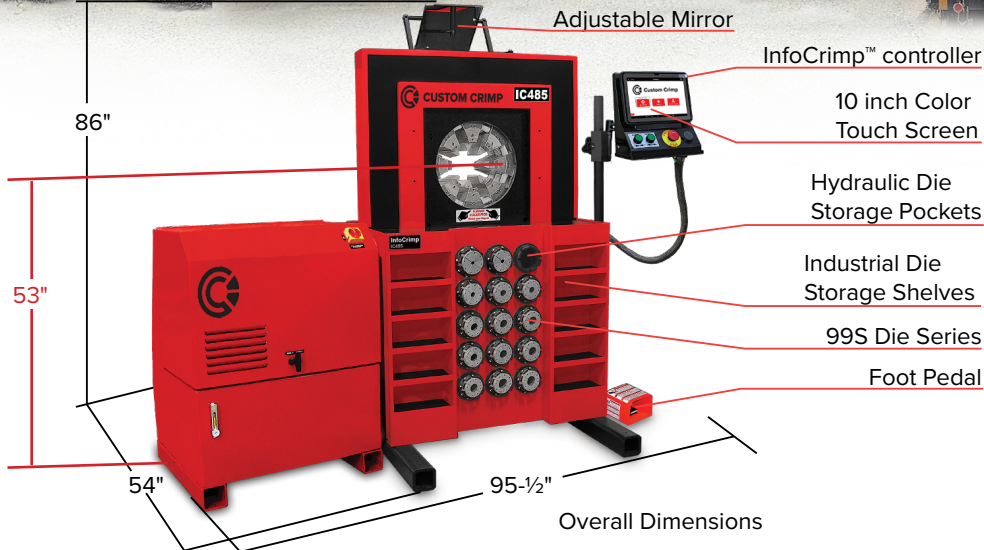
Adapter Die Set 145S (Included) P/N:103276
Adapter Die Set 230S (Included) P/N:103275



Adjustable Mirror
(Included) P/N:103471



Industrial Die Compartment
(Available) P/N:103572-Red



IC485 Technical Specifications
Crimping force: 485 Ton
Hydraulic hose capacity: 2 Wire = 3", 4 Spiral and 6 Spiral = 3"
Industrial hose capacity: 10"
Crimper Size: L: 54" x W: 62" x H: 86"
Power Unit Size: L: 28" x W: 33-1/2" x H: 45"
Overall Weight: 6,185 lbs
Power: 7.5HP/230V/3Phase (Standard) 7.5HP/440V-480V/3Phase (Optional) 5HP/230V/1Phase (Optional)
Adjustability: Inch / Metric
Die Series: 99S /145S / 230S / 230OB
Opening w/o dies: 350mm / 13.75"
Master die inside diameter: 230mm / 9.1"
Master die travel: 125mm / 4.9"
Reservoir capacity: 45 US Gallons
Oil type: ISO 46 Hydraulic Oil

