



CUSTOM CRIMP™

Innovating SMART Hose Assembly Solutions Since 1979

NIC240 / NIC260 Special Use Nut Crimpers



InfoCrimp™ Technology Features

Functionality:

- Easy to use interface, on a 10-inch color capacitive touch screen.
- Daily reports*.
- Remote downloading of updated crimp specifications*.
- Favorite thousands of crimp details.
- Security - end-to-end data encryption from tablet to cloud.
- Operators only have access to essential crimp applications.

Operationally:

- Bluetooth calipers provided with each crimper.
- User accounts track operations to individual team members.
- Remote troubleshooting*.
- In-depth training and tutorial guides.
- Video support*.

Longevity:

- Preventative maintenance alerts.
- Full controller backup to the cloud*.
- Future enhancements through cloud updates*.

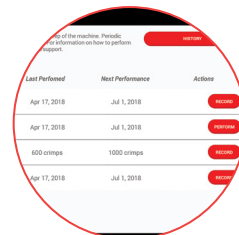
**Needs connection to Wi-Fi.*



Custom Crimp® InfoCrimp™ Technology, the future of crimping at your fingertips



Intuitive screens lead the operator through the setup and crimping process



Be alerted to preventative maintenance, record and view history of maintenance performed



InfoCrimp™ Technology supports bluetooth calipers to input crimp diameter measurements



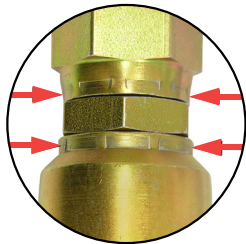
CUSTOM CRIMP™

Innovating SMART Hose Assembly Solutions Since 1979

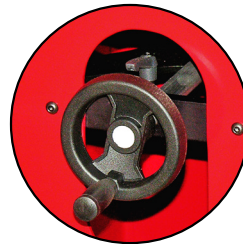
NIC240 / NIC260 Special Use Nut Crimpers



High Visibility: Fast loading and unloading.



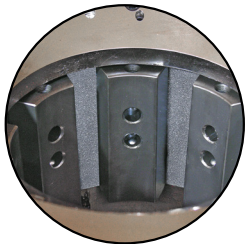
Dual Crimp Capability: Customized die sets for dual crimp faces.



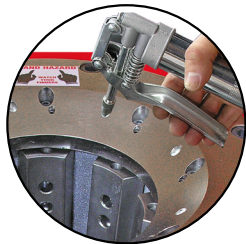
Hand Crank Height Adjustment: Enables the operator to accurately position the fitting.



Foot Pedal: For use in Semi and Full automatic mode.



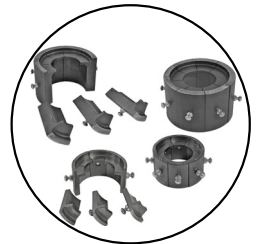
Vertical Dies Positioning with protective foam pads to minimize cylinder wear.



Easy grease maintenance through the 8 grease fittings.



Oil level sight glass & Oil drain ports.



Custom die sets available to meet all your crimping needs.

NIC240 / NIC260 Technical Specifications		
	NIC240 Nut Crimper	NIC260 Nut Crimper
Opening w/o dies:	120mm / 4.72"	182mm / 7.17"
Crimping force:	240 Ton	260 Ton
Hose capacity:	2SP: 2", 4SP: 1-1/2", 6SP: 1-1/4"	2SP: 2", 4SP: 2", 6SP: 1-1/2"
Industrial capacity:	2"	4"
Crimper size:	L: 24" x W: 32" x H: 49"	
Crimper weight:	790 lbs	
Power unit size:	L: 21" x W: 34" x H: 31-1/2"	
Power unit weight:	485 lbs	
Power:	5HP / 230V / 3Phase (Standard) 5HP / 440V / 3Phase (Optional) 5HP / 230V / 1Phase (Optional)	7.5HP / 230V / 3Phase (Standard) 7.5HP / 440V / 3Phase (Optional) 5HP / 230V / 1Phase (Optional)
Die series:	Custom die sets upon request	
Adapter dies:	N/A	145mm OD to 99mm ID
Control system:	InfoCrimp™ Controller (Standard) Dial Metric Micrometer (Optional)	
Reservoir capacity:	24 US Gallons	
Oil type:	ISO 46 Hydraulic Oil	



Innovating SMART Hose Assembly Solutions Since 1979