

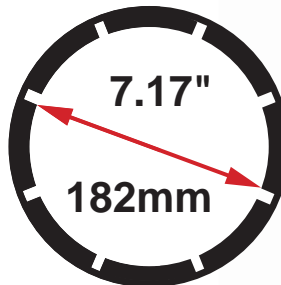
CC60 General Production Hose Crimper



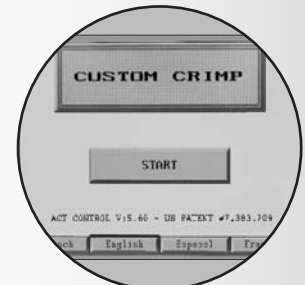
The CC60 Series hose crimper with the Patented ACT™ Controller and 265 tons of crimping force has the capability to crimp up to 4" industrial hose.

UNIQUE USER FRIENDLY PATENTED ACT™ CONTROLLER

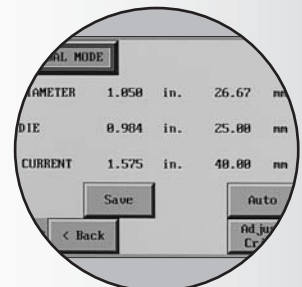
- Fully adjustable crimp to diameter.
- Production capabilities.
- Pressure Compensation uses pressure to eliminate "trial and error".
- Memory capacity for accurate repeatability.
- Automatically converts inch to mm and mm to inch so that no calculation is ever required.



Max Head Opening
W/O Dies



Patented ACT™ Controller:
Offers 4 language settings to choose from English, Espanol, Deutsch and Francais.



Features Of Operator Interface:
User Friendly navigation, Manual Mode, Semi Auto Mode, Full Auto Mode and Production Features.

ENGINEERED TO ACCOMMODATE YOUR NEEDS

- Hose capacity up to 1-1/2" 6 wire hydraulic and up to 4" industrial hose.
- Maximum head opening w/o dies 7.17" (182mm).
- Modern Patented ACT™ Controller with large touch screen and user friendly navigation.
- Foot Switch for use in Semi and Full Automatic Mode, keeping both hands free.
- Quick Change Tool makes die changes a quick and simple process.
- The Adjustable Back Stop speeds multiple crimps of the same hose and fitting.
- Easy grease maintenance through the 8 grease fittings.
- Protective Master Die Foam Pads between the die fingers prevent debris from dropping into the critical surfaces and causing permanent damage.
- Reservoir mounting holes allow the crimper to be bench or truck bed mounted if required.

DURABLE, RELIABLE DESIGN = PROFITABILITY

- 265 Tons of crimping force.
- 7.5 HP motor wired at 230 volts 3 phase with gear pump for fast crimps (Standard).
- Complete range of dies and accessories available.



Pressure Compensation:
Uses pressure to eliminate "trial and error".

Products covered by all or some of these Patents:
US 7,383,709; US 8,230,714; EP 1,909,987 and Patents Pending.

CC60 General Production Hose Crimper



The features found on the CC60 Series hose crimper and the accessories included make it the best value of any crimper in its class.



99mm Quick Change Tool (Included) P/N:102571



CC-Foot Switch (Included) P/N:CC-FOOTSWITCH



Manual Back Stop (Included) P/N:MBS-60



Electronic Back Stop (Optional) P/N:EBS-60



Adapter Die Set 145mm OD to 99mm ID (Included) P/N:103726



Mini Grease Gun w/ CRIMPX Die Lubricant 3 oz mini grease tube (Included) P/N:103889



Die Rack 9 Station Die Holders (Optional) P/N:102616-99mm



Crimper Stand 16 Station Die Holders (Optional) P/N:101247-99

Manual Back Stop

Pressure Compensation

Reservoir



The 7.5 HP motor delivers the power needed to get the job done quickly

Patented ACT™ Controller

Easy to use push buttons

Power Switch

Foot Pedal for use in Semi and Full automatic mode

Small Footprint for minimum use of space

Technical Data

265 Ton
Max 2SP: 2", 4SP: 2", 6SP: 1-½"
Max Industrial: 4"
L: 20" x W: 29" x H: 32"
Weight: 660 lbs
Power: 7.5HP / 230V / 3Phase (Standard) 7.5HP / 440V / 3Phase (Optional) 5HP / 230V / 1Phase (Optional) 1HP / 12VDC (Optional) Portable 1HP / 24VDC (Optional) Portable
Die series: 99S / 145S
Adjustability: Inch / Metric
Opening w/o dies: 182mm / 7.17"
Master die inside diameter: 145mm / 5.71"
Master die travel: 60mm / 2.4"
Reservoir capacity: 8 US Gallons
Oil type: ISO 46 Hydraulic Oil



See the complete line of CustomCrimp® Crimpers and Accessories at:

CustomCrimp®

www.customcrimp.com

(219) 462-6128