

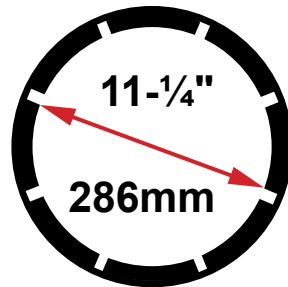
CC650 Production / Industrial Hose Crimper



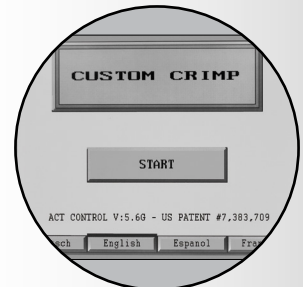
The CC650 Series hose crimper with the Patented ACT™ Controller and 350 tons of crimping force has the capability to crimp hoses from ¼" up to 6" in diameter.

UNIQUE USER FRIENDLY PATENTED ACT™ CONTROLLER

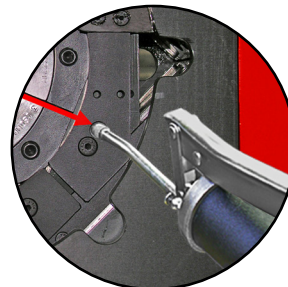
- Fully adjustable crimp to diameter.
- Production capabilities.
- Pressure Compensation uses pressure to eliminate "trial and error".
- Memory capacity for accurate repeatability.
- Automatically converts inch to mm and mm to inch so that no calculation is ever required.



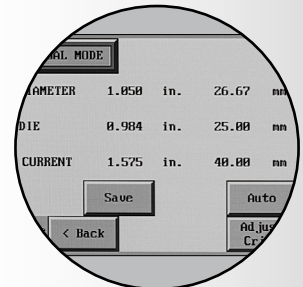
Max Head Opening W/O Dies: Can accommodate 6" 150 lbs SAE flange.



Patented ACT™ Controller: Offers 4 language settings to choose from English, Espanol, Deutsch and Francais.



Easy Maintenance: Through the 12 lubrication fittings.



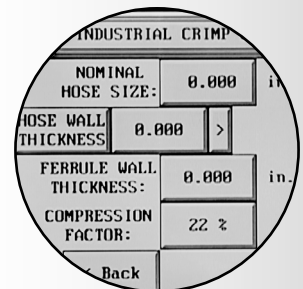
Features Of Operator Interface: User friendly navigation, Manual Mode, Semi Auto Mode, Full Auto Mode and Production Features.

ENGINEERED TO ACCOMMODATE YOUR NEEDS

- Hose capacity up to 2" 6 spiral hydraulic and up to 6" industrial.
- Large opening allows special and angled fittings to be handled easily.
- Modern Patented ACT™ Controller with large touch screen and user friendly navigation.
- Available CC650MIC (Manual Adjust Metric Micrometer).
- Mirror helps the operator to position the hose where it needs to be and make a precise crimp.
- Foot Switch for use in Semi and Full Automatic Mode, keeping both hands free.
- Quick Change Tool makes die changes a quick and simple process.
- Adjustable Back Stop speeds multiple crimps of the same hose and fitting.

DURABLE, RELIABLE DESIGN = PROFITABILITY

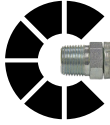
- 350 Tons of crimping force.
- 7.5 HP motor with dual stage pump (5 HP motor optional).
- Complete range of dies and accessories available.



Industrial Crimp Calculator: Takes guesswork out of industrial crimping.

Products covered by all or some of these Patents:
US 7,383,709; US 8,230,714; EP 1,909,987 and Patents Pending.

CC650 Production / Industrial Hose Crimper



The features found on the CC650 Series hose crimper and the accessories included make it the best value of any crimper in its class.



99mm Quick Change Tool (Included) P/N:102571



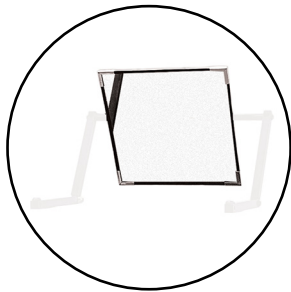
CC-Foot Switch (Included) P/N:CC-FOOTSWITCH



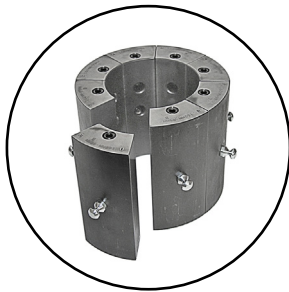
Manual Back Stop (Included) P/N:MBS-60



Electronic Back Stop (Optional) P/N:EBS-60



Mirror (Included) P/N:103471



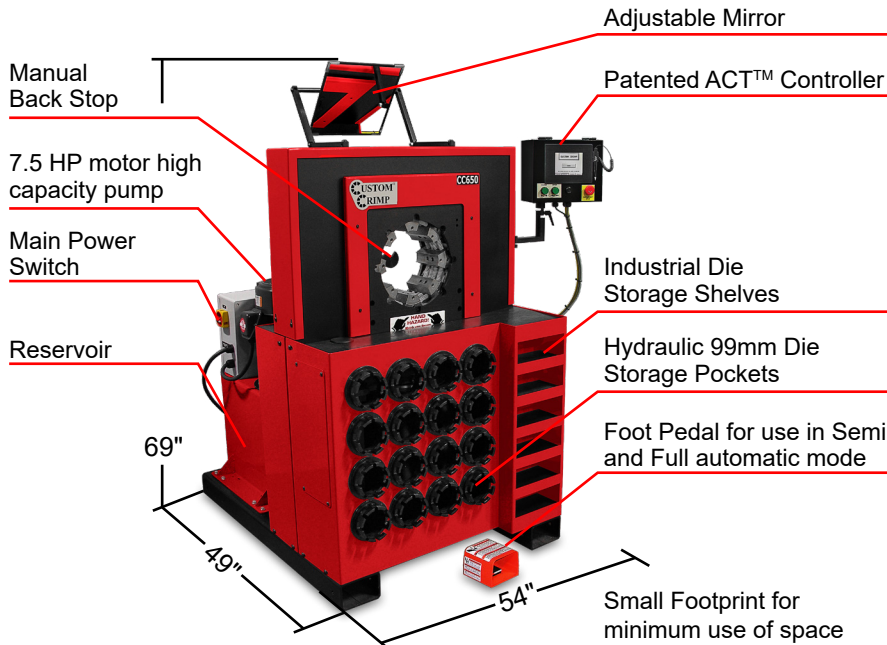
Adapter Die Set 160mm OD to 99mm ID (Included) P/N:103899



(1) Industrial Die Shelf (Included) P/N:103572



Mini Grease Gun with grease tube (Included) P/N:103889
Available CRIMPX Die Lubricant 3 oz mini grease tube P/N:103887



Technical Data CC650 / CC650MIC	
350 Ton	
6SP: 3"	
Max Industrial: 6"	
L: 49" x W: 54" x H: 69"	
Weight: 4,000 lbs	
CC650 Power: 7.5HP/230V/3Phase (Standard) 7.5HP/440V-480V/3Phase (Optional) 5HP/230V/1Phase (Optional)	
CC650 Adjustability: Inch / Metric	
CC650MIC Power: 5HP/230V/3Phase (Standard) 5HP/440V-480V/3Phase (Optional) 5HP/230V/1Phase (Optional)	
CC650MIC Adjustability: Metric	
Die series 99S / 160S / 160OB / 160mm to 99mm	
Opening w/o dies: 286mm / 11.25"	
Master die inside diameter: 160mm / 6.29"	
Master die travel: 128mm / 5"	
Reservoir capacity: 24 US Gallons	
Oil type: ISO 46 Hydraulic Oil	



See the complete line of CustomCrimp® Crimpers and Accessories at:

CustomCrimp®

www.customcrimp.com

(219) 462-6128